



- + Cost saving
- + Safety & risk prevention



**APLICACIONES
TECNOLÓGICAS**



EXOTHERMIC WELDING

APLIWELD[®] Secure+

www.at3w.com



Innovating the exothermic welding system

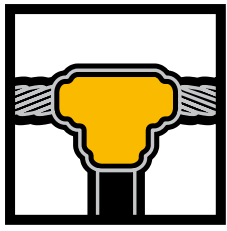
What is Apliweld® Secure+?

APLIWELD®-T: welding compound reactant in tablets

APLIWELD®-E: electronic starters and ignition unit

⊕ **Cost saving**

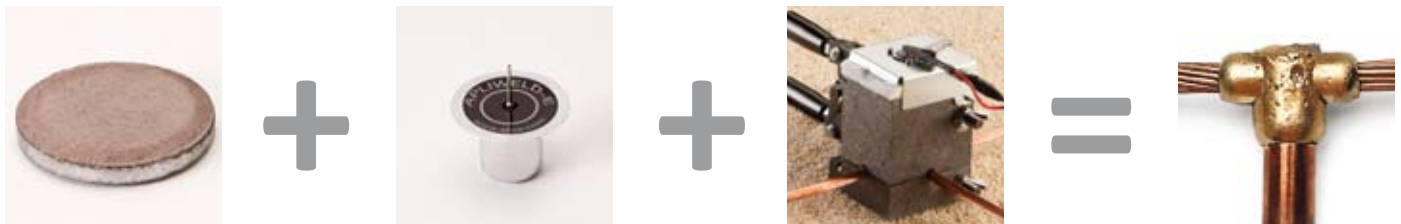
⊕ **Safety & risk prevention**



APLIWELD[®]

Secure⁺

How does it work?



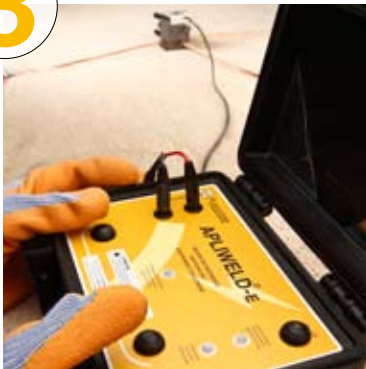
1



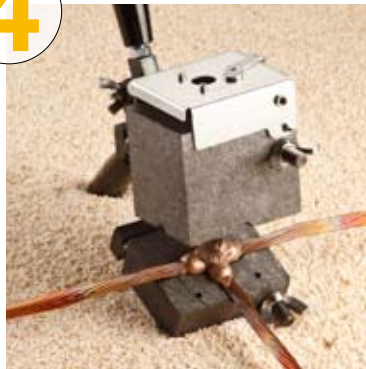
2



3



4



4 easy steps:

- 1 Load the **APLIWELD-T** tablets in the crucible. The proper number of tablets is marked on each mould.
- 2 Set **APLIWELD-E** electronic starter on the mould cover and connect the cocodrile clip and the banana plugs.
- 3 Press both ignition buttons simultaneously on **APLIWELD-E** ignition unit.
- 4 Get the welding result.

MULTIPLE MOULD:
APLIWELD Secure+ System is up to work using multiple mould.



For further information about the exothermic welding procedure please check out our web:
www.at3w.com



Innovating the exothermic welding system

Benefits:

Apliweld® Secure+ keeps the benefits of conventional Apliweld® system:

- It comprises equal or higher electrical conductivity than the conductors themselves.
- It won't be corrode thought-out time and will resist the galvanic coupling.
- Withstands repeated current faults.
- It never increases in resistance.
- Superior mechanical and squeezing resistance than the conductors themselves.
- It offers a permanent welding, a very important low-resistance connection to reach the most reliable and longwearing result in earthings.

Furthermore, **Apliweld® Secure+** provides:

Cost saving:

- A single type of welding compound for any type of connection using Apliweld®-T tablets, so less stock is needed.
- Greater ease of use thus reducing labor costs and training time.
- The quicker reaction, easier slag removing and lower released energy result in longer mould life.

Labour & Risk Prevention:

- Apliweld®-E ignition unit allows remote control starting, increasing work safety and avoiding labour risks.
- Apliweld®-E- ignition starters do not need flammable material or flint Igniters, facilitating their use, storage and transportation (by air, land or sea, in unlimited quantities).

Moreover:

- Less metallic or plastic waste.
- Versatility - Enables the work with wind, high humidity and other common problems of fieldwork..
- In standard storage conditions, Apliweld® Secure+ is never degraded throughout time.
- APLIWELD®-T tablets also ignite using traditional Starting powder.

APLIWELD-T[®]

EXOTHERMIC WELDING TABLETS



PRODUCT DATA SHEET

DESCRIPTION

Innovative welding compound format with a single diameter of 43 mm. which allows any type of bonding, by using one or more tablets.

TECHNICAL CHARACTERISTICS

- **Reference:** AT-020N
- **Tablet dimensions:** \varnothing 43 mm.
- **Units per pack:** 20 tablets
- **Packaging dimensions:** 52x52x220 mm.
- **Total weight:** 900 gr.



Benefits:

- Less stock costs
- Quick welding reaction
- Helps to improve mould endurance

APLIWELD[®]-E

ELECTRONIC STARTERS FOR EXOTHERMIC WELDING



PRODUCT DATA SHEET

DESCRIPTION

Cases without flammable material that initiate the welding reaction only when receiving energy from the ignition unit.

TECHNICAL CHARACTERISTICS

- **Reference:** AT-010N
- **Dimensions:** 26 mm. ø24 mm.
- **Units per pack:** 10
- **Packaging dimensions:** 125x105x40 mm.
- **Total weight:** 87 gr.
- **Time of reaction:** < 10 sec.
- **Material:** not flammable

Benefits:

- Less occupational hazards thanks to their safe use, storage and transportation

APLIWELD[®]-E



IGNITION UNIT

PRODUCT DATA SHEET

DESCRIPTION

Kit that enables controlled and remote energy intake, activating the electronic starter, quickly and safely. Includes: ignition unit (AT-096N), cable (AT-098N), 5 cocodrile clips (AT-099N), battery charger and bag carrier.

TECHNICAL CHARACTERISTICS

- **Reference:** AT-100N
- **Power supply:** Lead acid battery 6V 7Ah
- **DC Voltage:** 6V DC
- **Battery charge:** 12-36V DC 500 mA
- **Battery life:** more than 100 weldings
- **Battery charging time:** 10 hours

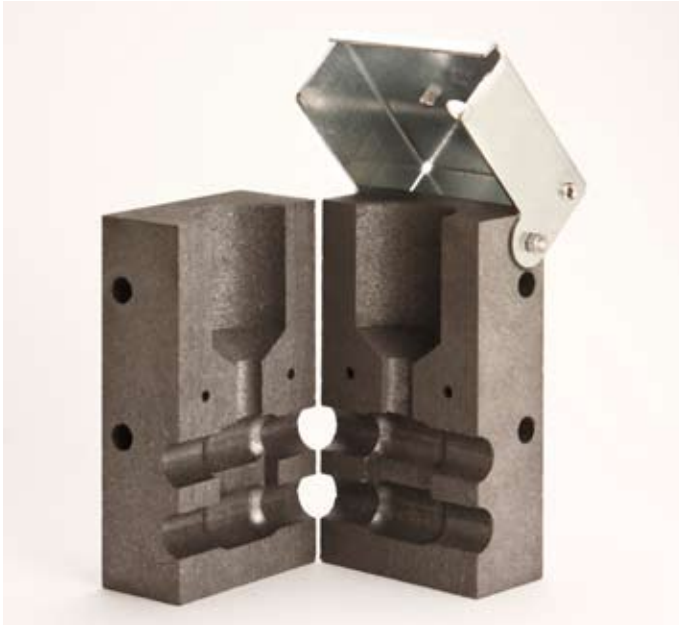
- **Dimensions:** 216x180x102 mm
- **Wieght:** 2300 gr.
- **Cable dimensions:** 2x1,5x1500mm
- **Total weight:** 3.500 gr.
- **Working temperature:** -10°C a 60°C



Benefits:

- Remote ignition control, increasing work safety and reducing occupational hazards.

SPECIFIC MOULD



Apliweld® Secure+ uses specific graphite moulds depending on the type of connection and the type of the conductors.

Use the guide on www.lightningprotection-at3w.com to choose the mould according to the conductors you need to weld. In all our moulds it is specified the number of tablets are required.

Moulds and tablets required for common connections

Type of connection	Nº of tablets
T cable-earth rod	
C35/T14/TV	2
C50/T14/TV	2
C50/T16/TV	2
C70/T14/TV	2,5
C70/T16/TV	2,5
C95/T14/TV	2,5
C95/T16/TV	2,5
T cable-cable	
C35/C35/TH	1,5
C50/C50/TH	2
C70/C70/TH	2
C95/C95/TH	2,5
C120/C120/TH	3
C150/C150/TH	4
Parallel cable/cable. Horizontal (PH) or vertical (PV)	
C35/C35/PH or PV	2
C50/C50/PH or PV	2
C70/C70/PH or PV	2
C95/C95/PH or PV	3
C120/C120/PH or PV	3
CPH0/CPH0/PH or PV	4
Cross cable over cable	
C35/C35/XS	3
C50/C50/XS	3
C70/C70/XS	4
C95/C95/XS	4,5
C120/C120/XS	5
C150/C150/XS	5

Type of connection	Nº of tablets
Parallel cable-rebar	
C35/V16/PV	1
C35/V20/PV	1,5
C50/V16/PV	1,5
C50/V20/PV	2
C95/V16/PV	2
C95/V16/PV	2
Cable-metallic surface	
C35/M/VPV	1
C50/M/VPV	2
C70/M/VPV	2
C95/M/VPV	2
C120/M/VPV	2,5
C150/M/VPV	3
T tape-earth rod	
P302/T14/TV	3
P302/T16/TV	3
Cross tape over tape	
P302/P302/XS	2
Straight cable-tape	
C50/P302/LH	2

MULTIPLE MOULD



APLIWELD Secure+ System is up to work using multiple mould.

APLIWELD Secure+ System using multiple mould allows the most common welding with the same graphite pieces, reducing expenses, materials and the delivery time.

The easiest way of working with the multiple mould is acquiring the described case that includes all the accessories (ref. **MM-CT14** or **MM-CT16**)

The process to set the welding with multiple mould is the same than for the specific one.





www.at3w.com

HEADQUARTERS

Parque Tecnológico de Valencia,
C/ Nicolás Copérnico, 4
46980 PATERNA (Valencia)
SPAIN
T. +34 961 318 250
F. +34 961 318 206
atsa@at3w.com